

PROJECT: _____	UNIT TAG: _____	QUANTITY: _____
REPRESENTATIVE: _____	TYPE OF SERVICE: _____	DATE: _____
ENGINEER: _____	SUBMITTED BY: _____	DATE: _____
CONTRACTOR: _____	APPROVED BY: _____	DATE: _____
	ORDER NO.: _____	DATE: _____

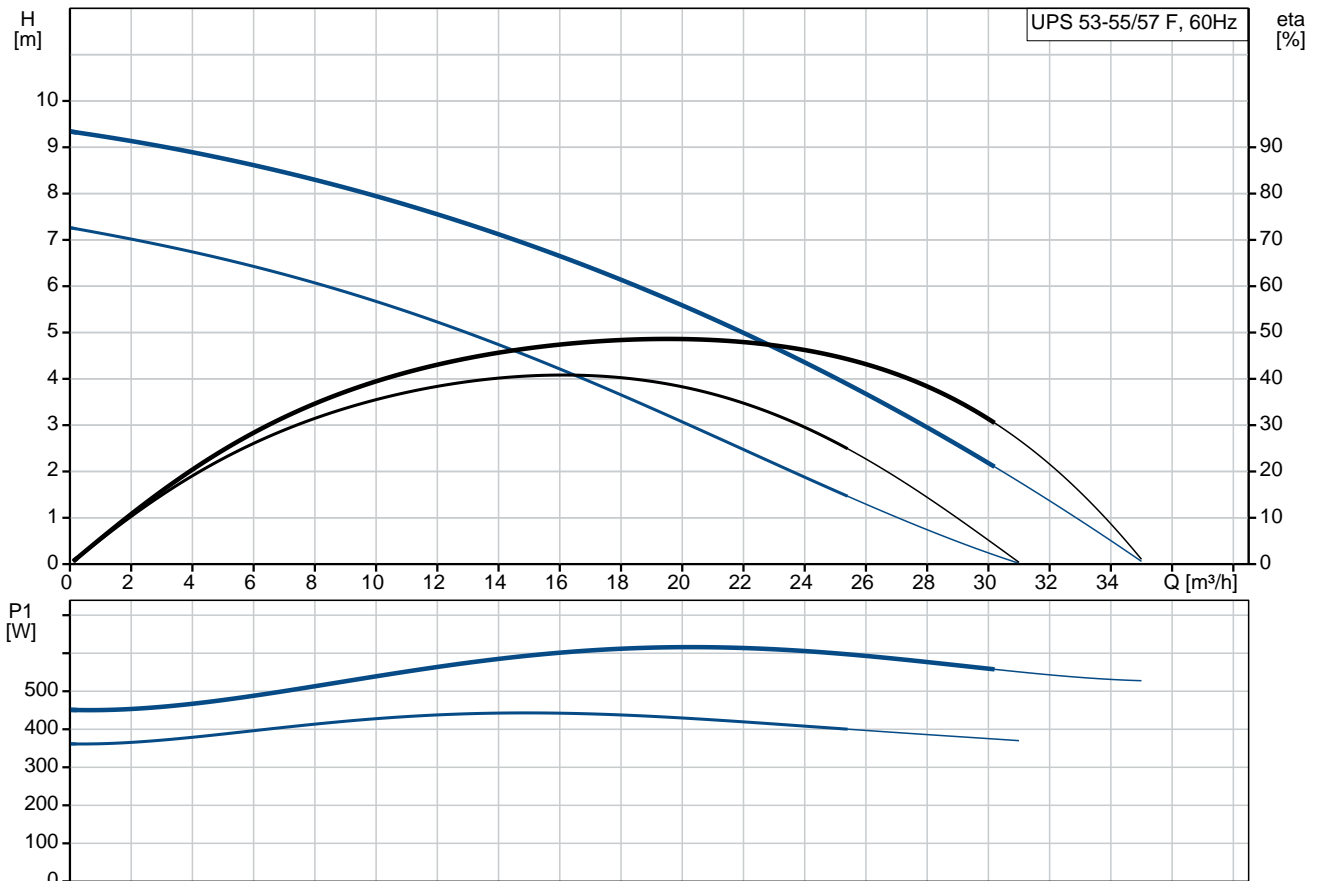


UPS 53-55/57 F

Circulator pumps

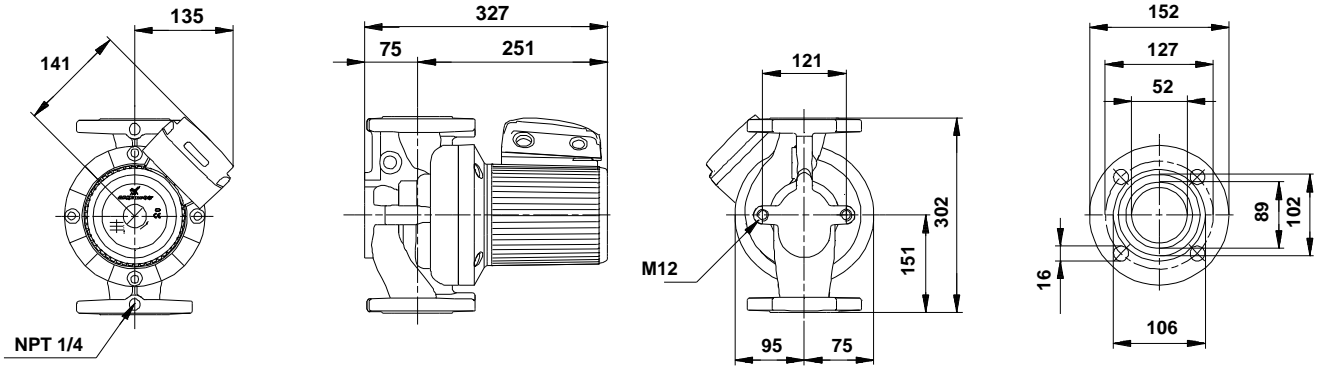
Note! Product picture may differ from actual product

Conditions of Service	Pump Data	Motor Data
Flow: _____	Maximum operating pressure: 10 bar	Max. power input: 610 W
Head: _____	Liquid temperature range: -10 .. 120 °C	Rated voltage: 575 V
Efficiency: _____	Maximum ambient temperature: 40 °C	Mains frequency: 60 Hz
Liquid: Water	Approvals: CUL	Enclosure class: X4D
Temperature: 60 °C	Type of connection: F	Insulation class: F
NPSH required: _____	Flange standard: USA	Motor protection: CONTACT
Viscosity: _____	Pipe connection: GF 53	Thermal protection: external
Specific Gravity: 0.985	Product number: 96654377	



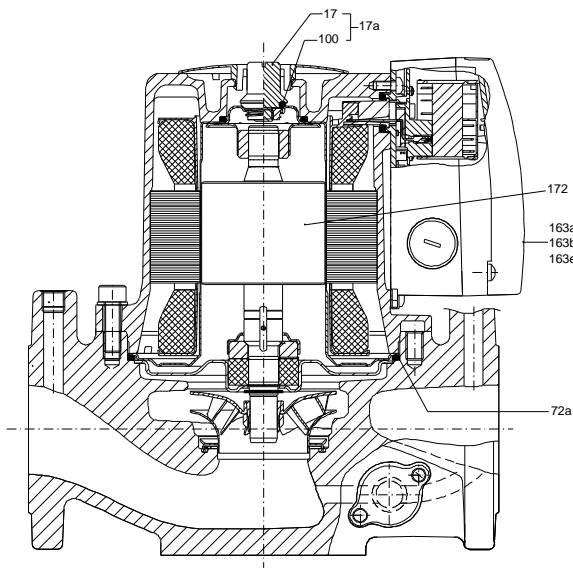
4

3



Materials:

- Pump housing: Cast iron
EN-JL1040
- ASTM 35 B - 40 B
- Impeller: Stainless steel
DIN W.-Nr. 1.4301
AISI 304



Qty. Description

1 UPS 53-55/57 F



Note! Product picture may differ from actual product

Product No.: [96654377](#)

The pump is of the canned rotor type, i.e. pump and motor form an integral unit without shaft seal and with only two gaskets for sealing. The bearings are lubricated by the pumped liquid.

In order to avoid problems in connection with disposal, great importance has been attached to using as few different materials as possible.

The pump is characterized by:

- * 2 speed motor.
- * Ceramic radial bearings.
- * Carbon axial bearing.
- * Stainless steel rotor can, bearing plate and rotor cladding.
- * Aluminium alloy stator housing.
- * Cast iron pump housing.
- * Stator with built-in thermal switch.

The motor is a 3-phase motor.

The pump is supplied with a standard module in the terminal box. The standard module is to be connected to the mains supply via external contactor.

Controls:

Relay: without relay

Liquid:

Pumped liquid: Water
 Liquid temperature range: -10 .. 120 °C
 Selected liquid temperature: 60 °C
 Density: 983.2 kg/m³

Technical:

Approvals on nameplate: CUL

Materials:

Pump housing: Cast iron
 EN-JL1040
 ASTM 35 B - 40 B
 Impeller: Stainless steel
 DIN W.-Nr. 1.4301
 AISI 304

Qty.	Description
------	-------------

Installation:

Range of ambient temperature: 0 .. 40 °C
Maximum operating pressure: 10 bar
Flange standard: USA
Type of connection: F
Pipe connection: GF 53
Pressure rating: 145 psi
Port-to-port length: 302 mm

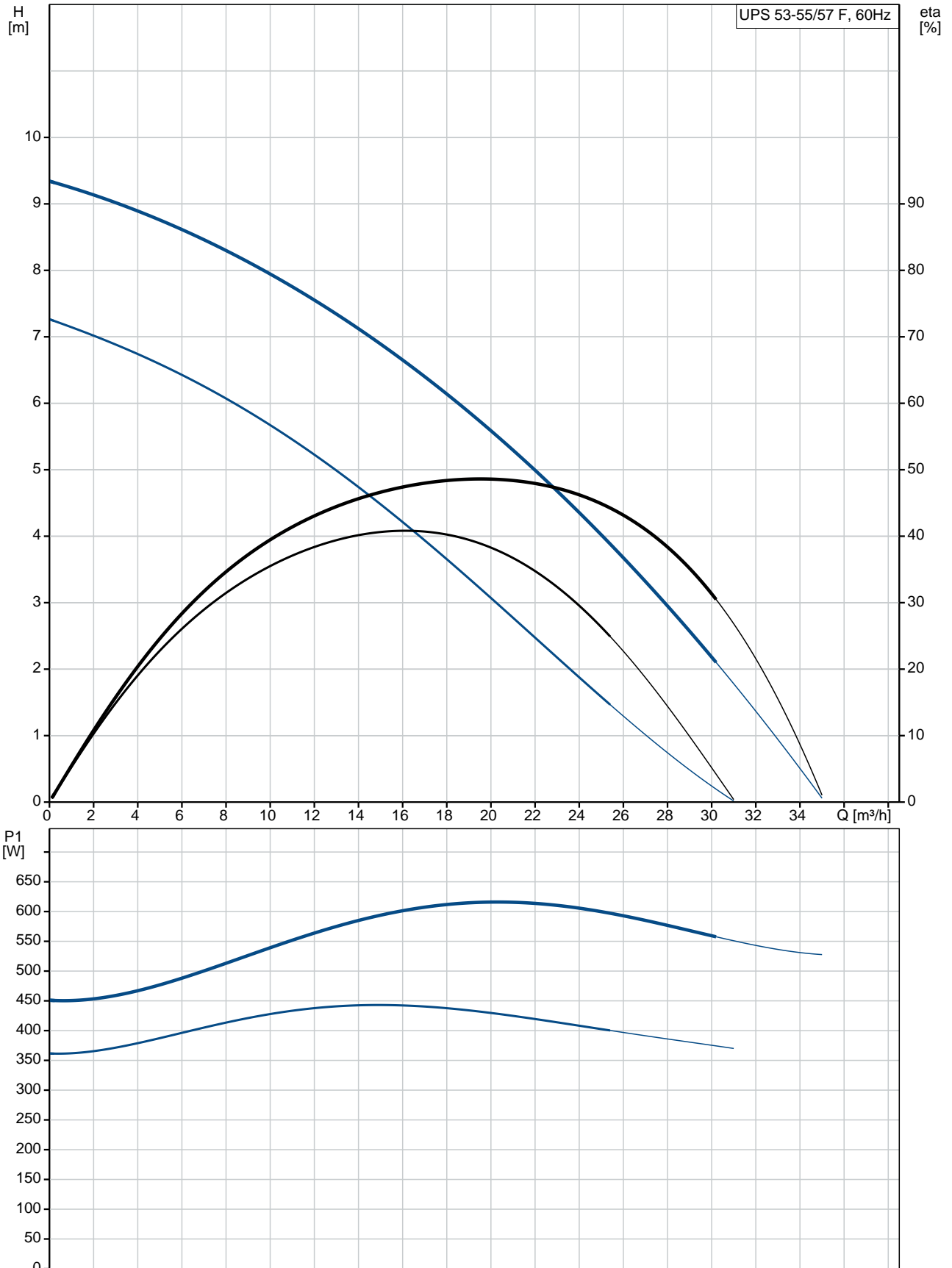
Electrical data:

Power input in speed 2: 440 W
Max. power input: 610 W
Mains frequency: 60 Hz
Rated voltage: 3 x 575 V
Current in speed 2: 0.48 A
Current in speed 3: 0.77 A
Cos phi in speed 2: 0.92
Cos phi: 0.8
Enclosure class (IEC 34-5): X4D
Insulation class (IEC 85): F

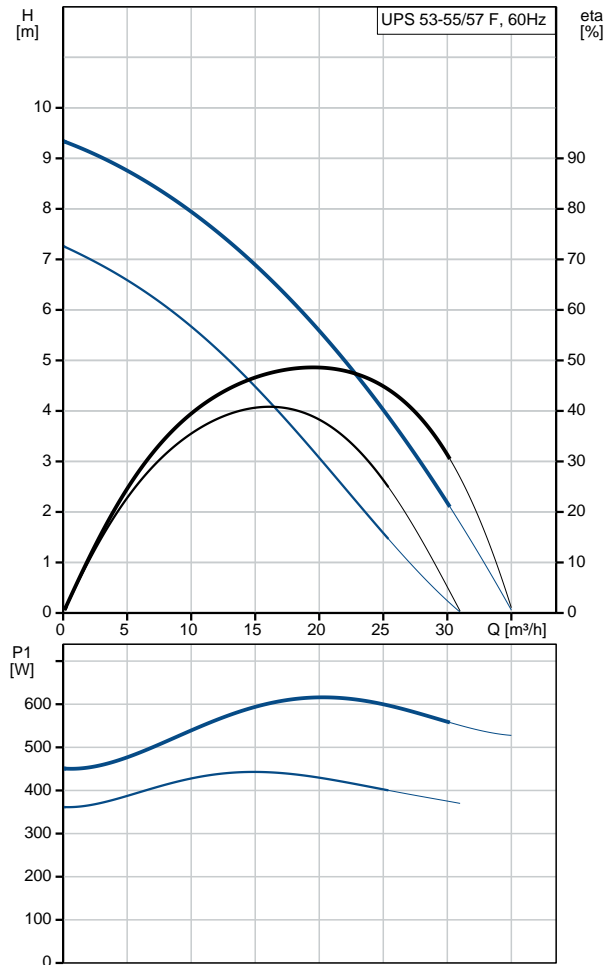
Others:

Net weight: 23.7 kg
Gross weight: 24 kg
Shipping volume: 0.059 m³

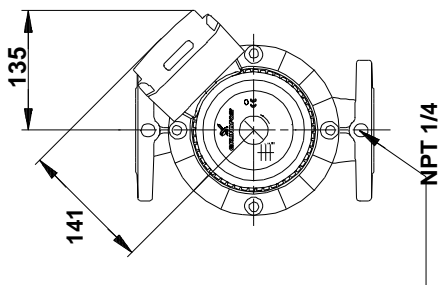
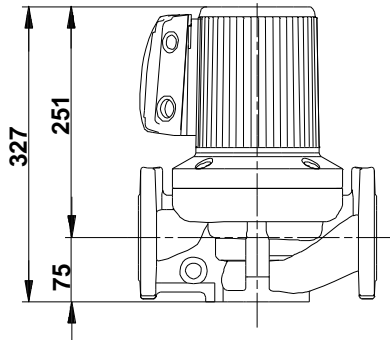
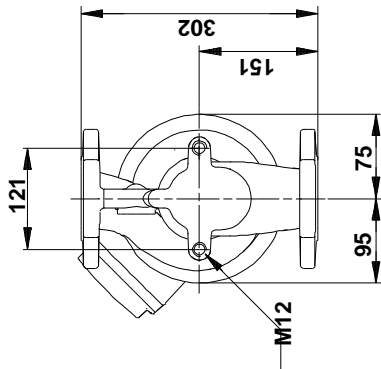
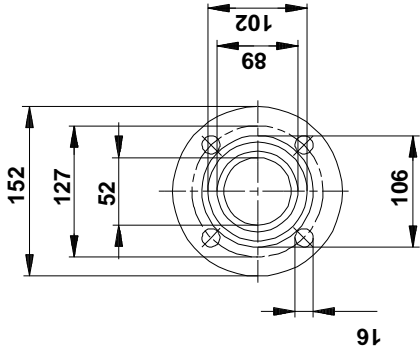
96654377 UPS 53-55/57 F 60 Hz



Description	Value
General information:	
Product name:	UPS 53-55/57 F
Product No:	96654377
EAN number:	5700836884946
	5700836884946
Technical:	
Speed no:	2
Head max:	55/57 dm
Approvals on nameplate:	CUL
Model:	C
Materials:	
Pump housing:	Cast iron
	EN-JL1040
	ASTM 35 B - 40 B
Impeller:	Stainless steel
	DIN W.-Nr. 1.4301
	AISI 304
Installation:	
Range of ambient temperature:	0 .. 40 °C
Maximum operating pressure:	10 bar
Flange standard:	USA
Type of connection:	F
Pipe connection:	GF 53
Pressure rating:	145 psi
Port-to-port length:	302 mm
Liquid:	
Pumped liquid:	Water
Liquid temperature range:	-10 .. 120 °C
Selected liquid temperature:	60 °C
Density:	983.2 kg/m ³
Electrical data:	
Power input in speed 2:	440 W
Max. power input:	610 W
Mains frequency:	60 Hz
Rated voltage:	3 x 575 V
Current in speed 2:	0.48 A
Current in speed 3:	0.77 A
Cos phi in speed 2:	0.92
Cos phi:	0.8
Enclosure class (IEC 34-5):	X4D
Insulation class (IEC 85):	F
Motor protec:	CONTACT
Thermal protec:	external
Controls:	
Relay:	without relay
Pos term box:	1.30H
Others:	
Net weight:	23.7 kg
Gross weight:	24 kg
Shipping volume:	0.059 m ³
Sales region:	Namreg



96654377 UPS 53-55/57 F 60 Hz



Note! All units are in [mm] unless others are stated.
Disclaimer: This simplified dimensional drawing does not show all details.